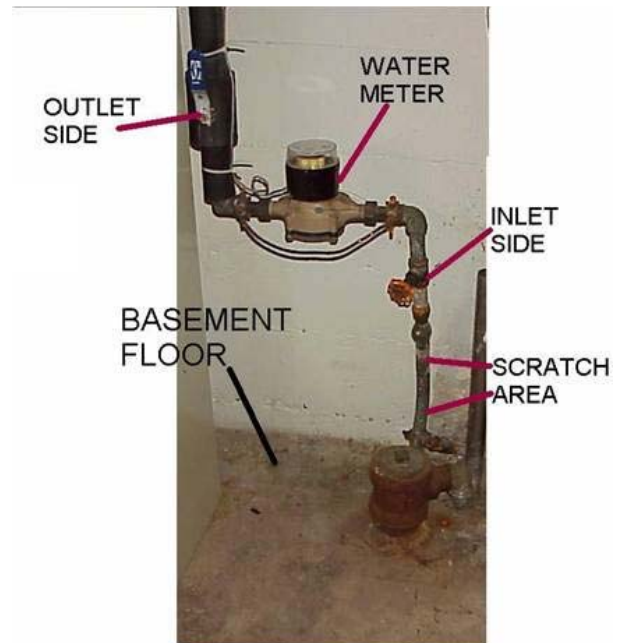


Identifying Your Water Service Line Type

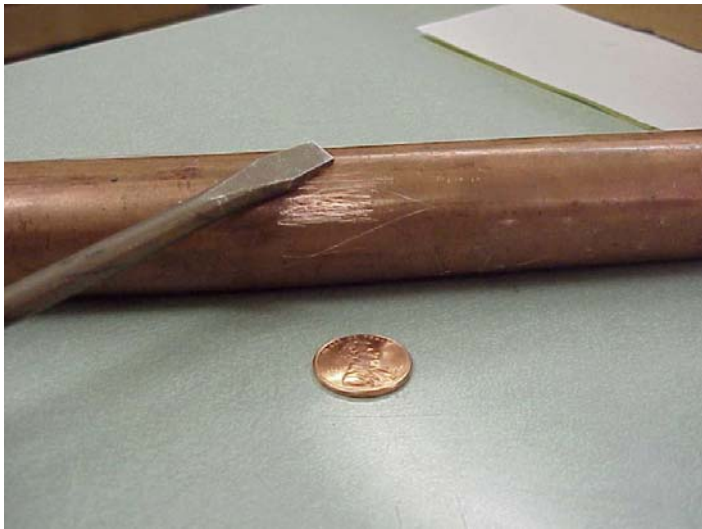
Recommended tools: flathead screwdriver, refrigerator magnet

- First, locate the water service pipe coming into the building (typically in the basement if your property has one). An "inlet valve" and the water meter are installed on the pipe after the point of entry.
- Next, identify a test area on the pipe between the point where it comes into the building and the inlet valve.
- If the pipe is covered or wrapped, expose a small area of metal.
- Use the flat edge of a screwdriver or other tool to scratch through any corrosion that might have built up on the outside of the pipe.



Lead Pipe

If the scratched area is shiny and silver, your service line is lead. A magnet will not stick to a lead pipe.



Copper Pipe

If the scratched area is copper in color, like a penny, your service line is copper. A magnet will not stick to copper pipe.

Galvanized Steel Pipe

If the scratched area remains a dull gray, and a magnet will stick to the surface, your service line is galvanized steel.

